

The background of the slide is a night-time photograph of an industrial facility, possibly a refinery or chemical plant. The scene is illuminated by various lights, with a prominent plume of white smoke or steam rising from a tall stack on the right side. Overlaid on the entire image is a complex network of glowing blue lines and nodes, resembling a digital or data network, which adds a technological and interconnected feel to the industrial setting.

PRIME PROCESS ENGINEERING COMPANY PROFILE

OUR GROUP – AT A GLANCE

- Industrial development organization headquartered in Türkiye.
- Expanding presence across the GCC.
- Unified investment, engineering, EPC, and operations expertise.
- Full lifecycle delivery of industrial assets.
- Focus on manufacturing growth and supply chain resilience.
- Trusted partner for government and private sector.
- Driven by excellence, governance, and sustainable value creation.

WHAT DRIVES US

We believe industry shapes the future. Every project we deliver strengthens economies, supports smarter infrastructure, and advances sustainability. We anticipate tomorrow's needs and build the foundations that enable long-term industrial progress — turning ideas into lasting value and empowering communities through innovation, technology, and resilient supply chains, driven by passion, responsibility, and a commitment to excellence.



What Drives Us

Delivering Sustainable Industrial Value Through Engineering

Transforming potential into progress

Turning industrial concepts into operational assets through disciplined engineering, structured investment, and reliable execution across complex regional and global markets.

Economic Growth & Resilience

Supporting long-term economic growth by developing resilient industrial projects that strengthen supply chains, enhance productivity, and create enduring value locally.

Innovation & Technical Excellence

Advancing technical excellence through innovation, rigorous engineering standards, continuous optimization, and practical industrial solutions.

Creating sustainable industrial impact

Delivering sustainable industrial impact by integrating efficiency, environmental responsibility, and long-term operational performance into every project.

Local Capabilities & Value Chains

Strengthening local capabilities and value chains by localizing expertise, building partnerships, and enabling competitive industrial ecosystems.



WHAT DRIVES US

Our values guide every decision, grounded in integrity, excellence, responsibility, collaboration, and innovation, enabling disciplined engineering, transparent governance, trusted partnerships, and continuous improvement that deliver sustainable industrial performance, long-term value creation, and positive impact across markets, stakeholders, and communities globally.



OUR VALUES

Our values guide how we conduct business, build partnerships, and deliver industrial excellence. They reflect our commitment to integrity, responsibility, and continuous improvement in everything we do.

We act with honesty, transparency, and accountability across all decisions and partnerships.

Ensuring consistent quality through engineering rigor and disciplined project execution.

We protect people, communities, and the environment through responsible and safe industrial practices.

We achieve better outcomes by working closely with partners, clients, and stakeholders.

We drive continuous improvement through practical innovation across engineering operations.

MISSION

Our mission is to develop and deliver high-quality industrial assets that enable regional manufacturing growth, support industrial diversification, and create sustainable long-term value. We combine investment capability with advanced engineering and EPC expertise to ensure every project is technically robust, financially viable, and operationally reliable. Through disciplined execution and strong partnerships, we contribute to building resilient industrial ecosystems that serve national priorities and future economic needs.

Enable Industrial Growth

Develop industrial assets and manufacturing capabilities that strengthen supply chains, support diversification, and accelerate regional industrial transformation.

Deliver Excellence

Execute projects with advanced engineering and disciplined EPC delivery to ensure safe, reliable operations and strong long-term industrial performance.

Create Sustainable Value

Create lasting industrial and economic value by prioritizing local content, responsible resource use, and alignment with national development priorities.

Build Trusted Partnerships

Build trusted collaboration with governments, investors, and industry partners through transparency and shared goals that drive mutual success.

Our Vision

Empowering a sustainable and competitive industrial tomorrow.

Lead Regional Industrial Development

Position the company as a strategic driver of advanced manufacturing and industrial development across the Middle East and key global markets.

Strengthen Industrial Self-Sufficiency

Support nations in reducing import dependency by building competitive, value-added industrial capabilities and resilient supply chains.

Champion Innovation & Technology

Integrate modern engineering, automation, and emerging industrial technologies to drive efficiency and enhance competitiveness.

Deliver Sustainable Industrial Impact

Build future-ready industrial assets that prioritize environmental responsibility, resource efficiency, and long-term sustainability.

Setting Operational Excellence

Become the trusted benchmark for reliable execution, operational performance, and partnership-driven success in industrial development.



Who We Are

Integrated engineering and execution for industrial projects

Integrated Industrial Platform

An industrial development platform integrating engineering, feasibility, and execution to deliver complex process-based manufacturing.

Feasibility Driven Project Development

We prioritize technical, commercial, and operational feasibility to ensure projects are bankable, efficient, and sustainable from inception.

Advanced Engineering Expertise

Deep expertise in process engineering and industrial project development across chemicals, manufacturing, and infrastructure sectors.

Disciplined Project Execution

Structured project delivery from concept to operation, ensuring quality, safety, schedule control, and long-term performance.

Long Term Strategic Partnerships

We work as a strategic partner to investors and stakeholders, supporting industrial assets throughout their full lifecycle and operations.



What We Do

Complete industrial solutions from investment to operations.

Industrial Development Platform

We identify and structure industrial projects with clear financial models and strategic alignment, ensuring strong governance, controlled risk, and long-term value creation.

Process Engineering & Design

We deliver advanced process and facility engineering with accuracy, compliance, and optimization, ensuring safe & efficient industrial performance at every stage.

Turnkey EPC Project Execution

We manage procurement, construction, testing, and commissioning with strict quality, schedule discipline, and risk oversight to ensure reliable delivery.

Manufacturing & Equipment Supply

We produce industrial equipment and modular systems with controlled quality, efficient fabrication, and technology integration to support delivery and operational continuity.

Operations & Lifecycle Support

We ensure stable operations through performance monitoring, preventive maintenance, and efficiency upgrades, maintaining compliance and maximizing asset productivity.





Turnkey Chemical Plant Solutions



Innovative Engineering. Efficient Use.

PPE provides advanced process engineering, full EPC delivery, and operational performance support for manufacturing and industrial facilities — ensuring safety, efficiency, and long-term reliability.



Engineering Excellence. Strategic Investments.

CERM-EX develops and delivers large-scale industrial and infrastructure projects, managing investment, project structuring, and construction with strong governance and alignment to national industrial goals.



Sustainable Technology. Zero Waste Focus.

FAM focuses on innovative and environmentally responsible industrial production, applying advanced technologies to support zero-waste strategies and resource-efficient chemical manufacturing.



Industrial Salt & Chemical Systems

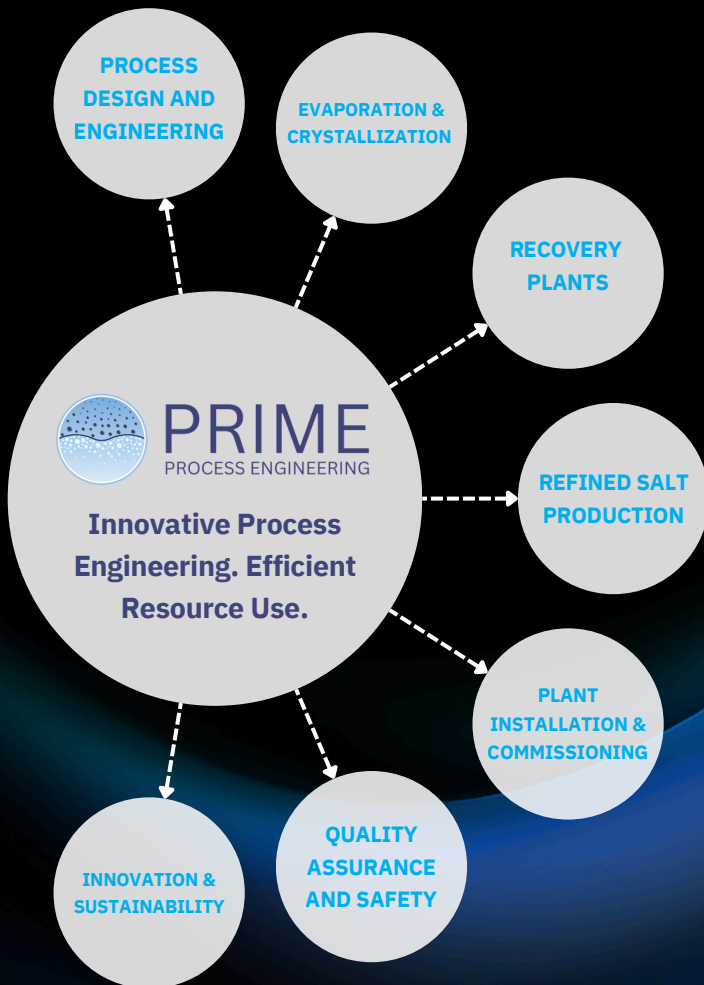
Salt Endüstri brings decades of specialized expertise in salt-based manufacturing technologies, delivering engineered solutions and systems tailored to industrial applications and environmental standards.



Zinc & Sulfur. Engineered to Perform.

Norya Chemicals develops and supplies high-quality specialty chemical products serving industrial sectors that rely on performance-critical zinc and sulfur derivatives, backed by trusted production know-how.





Innovative Engineering. Efficient Use.

PROCESS DESIGN AND ENGINEERING

Our process design and engineering services ensure innovative, efficient, and customized solutions for chemical plants. From feasibility studies to detailed engineering, we deliver tailored systems optimized for maximum performance and sustainability.

EVAPORATION & CRYSTALLIZATION

We specialize in advanced evaporation & crystallization systems, including MVR and TVR technologies, solid crystallization, and recrystallization. These solutions are designed for precision, energy efficiency, and reliability across diverse applications.

RECOVERY PLANTS

Our recovery solutions focus on sustainability and resource efficiency, providing systems for acid recovery, solvent recovery, nickel recovery, and zero-liquid waste. These technologies help industries reduce waste and maximize resource utilization.

REFINED SALT PRODUCTION

We offer turnkey solutions for producing refined salts and various chemicals, such as sodium sulfate, sodium bicarbonate, copper sulfate, and iron sulfate. Our comprehensive services ensure quality and reliability in all production processes.

PLANT INSTALLATION AND COMMISSIONING

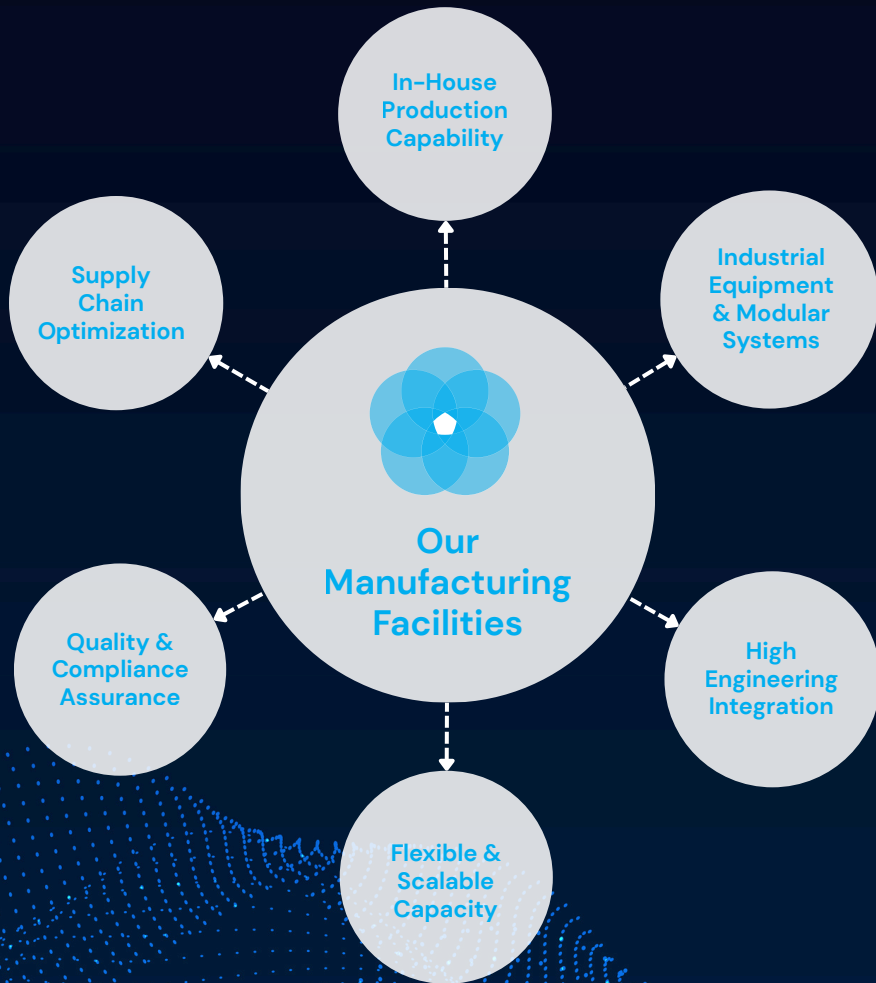
With expert project management and installation teams, we ensure seamless plant integration and commissioning. From equipment setup to operational handover, our focus is on delivering on-time and efficient plant startups.

QUALITY ASSURANCE AND SAFETY

We prioritize quality assurance at every stage of the process. Our robust systems guarantee products that meet international standards while maintaining the highest levels of operational safety and environmental responsibility.

INNOVATION AND SUSTAINABILITY

Innovation drives everything we do. By integrating cutting-edge technologies and sustainable practices, we deliver advanced chemical plant solutions that reduce environmental impact while maximizing efficiency and performance.



In-House Production Capability

Our internal fabrication and assembly capabilities give us full control over quality, timelines, and cost efficiency. By manufacturing key components in-house, we ensure reliable delivery, seamless integration with engineering, and long-term performance across every industrial project.

Industrial Equipment & Modular Systems

We design and manufacture critical process equipment, modular plant units, and supporting infrastructure that meet precise project specifications. Our integrated approach ensures optimized performance, reduced installation time, and seamless compatibility with overall plant design.

High Engineering Integration & Coordination

Direct coordination between design and fabrication teams ensures precision manufacturing, seamless installation, and faster commissioning. This integrated approach delivers optimized performance, reduced site work, and improved efficiency throughout the entire project lifecycle.

Flexible & Scalable Capacity

We support both standalone equipment fabrication and large turnkey industrial plant delivery through scalable production capacity. This capability ensures consistent quality, reliable schedules, and seamless coordination across diverse project requirements.

Quality & Compliance Assurance

Our fabrication processes follow stringent QA/QC procedures and international engineering standards to ensure long-term reliability and safe operations. This controlled approach delivers proven performance, reduces lifecycle risk, and maintains consistent quality across every industrial asset.

Supply Chain Optimization

Localized production planning reduces reliance on external vendors, improves delivery schedules, and enhances project risk control throughout execution. This approach ensures better coordination, stronger cost efficiency, and increased certainty in delivering high-performance industrial facilities.

INDUSTRIAL CHEMICAL SEGMENTS WE FOCUS ON

Our Group develops and supports industrial projects across strategic chemical sectors that are essential for regional economic growth and manufacturing self-sufficiency:



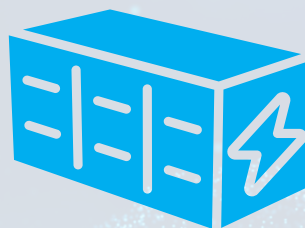
WATER TREATMENT
CHEMICALS



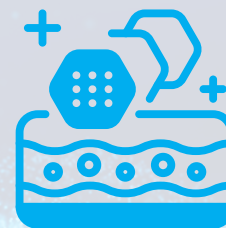
SPECIALTY CHEMICALS
& ADDITIVES



INORGANIC SALTS &
MINERAL CHEMICALS



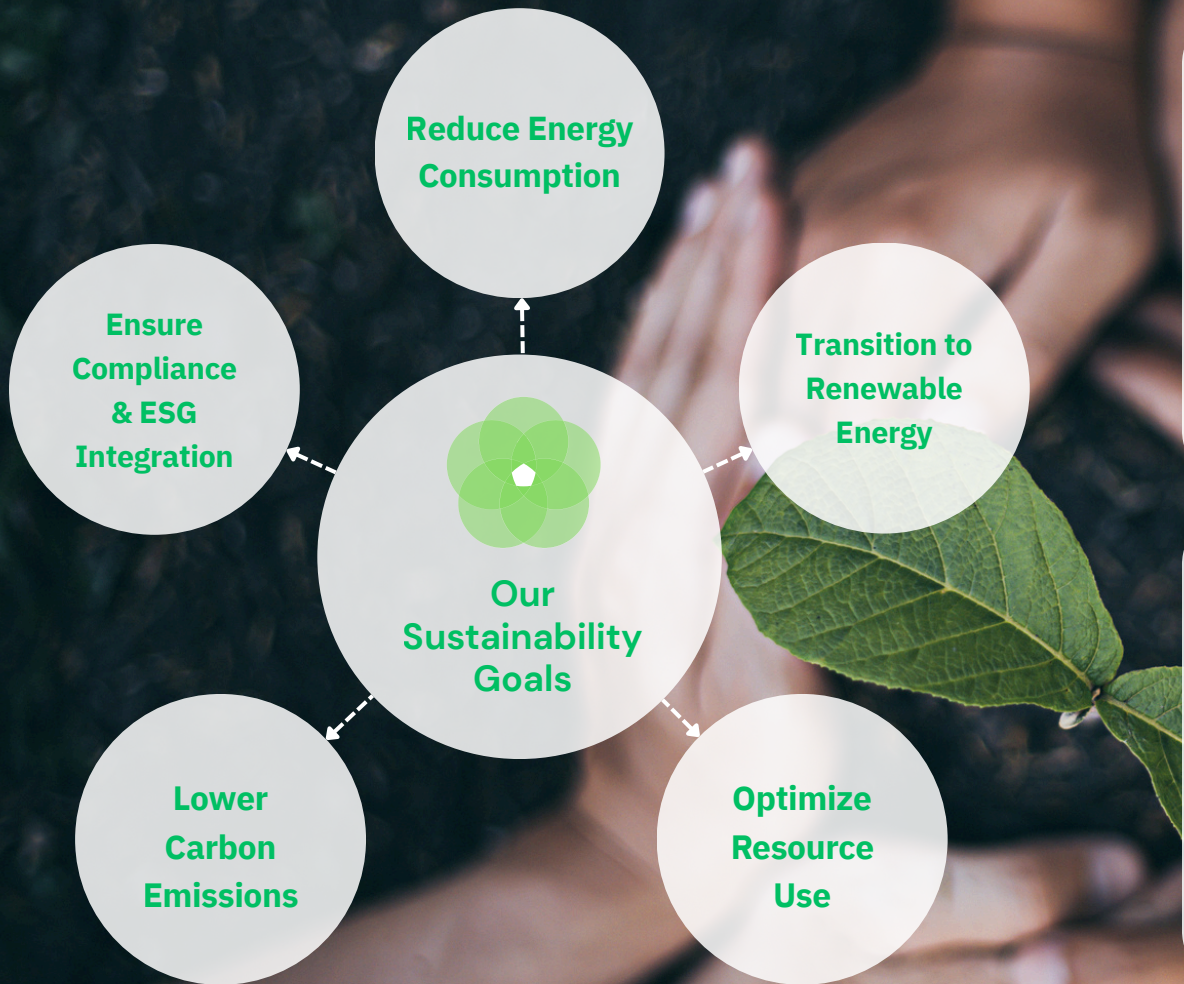
BATTERY & ENERGY
STORAGE MATERIALS



PIGMENTS &
FUNCTIONAL MATERIALS



INDUSTRIAL ACIDS &
BASE CHEMICALS



Sustainability Engineered for Industry

Reduce Energy Consumption

We enhance energy efficiency through optimized engineering and advanced controls, reducing operational demand while maintaining strong performance & reliability.

Transition to Renewable Energy

We integrate clean energy sources such as solar systems and net metering solutions to lower grid dependency, enabling continuous operations with reduced carbon intensity.

Optimize Resource Efficiency

We implement circular process technologies including water recycling and chemical recovery to minimize waste, cutting costs and supporting long-term sustainability objectives.

Lower Carbon Emissions

We reduce emissions by improving process efficiency, adopting cleaner industrial solutions, and aligning our operations with evolving environmental requirements.

Ensure Compliance & ESG Integration

We follow international best practices in sustainability, safety, and governance to ensure compliance and consistently deliver responsible industrial performance.



FROM VISION TO INDUSTRIAL REALITY.

